

**CONFIDENTIAL**  
DO NOT DISTURB  
THE EXISTING TENANT

# WILSONVILLE

## INDUSTRIAL OPPORTUNITY

### 26875 SW BOONES FERRY RD



**FOR LEASE**

#### ADDRESS

26875 SW Boones Ferry Rd  
Wilsonville, OR 97070

#### PROPERTY SIZE

4.64 AC / 202,118 SF

#### BUILDING SIZE

32,850 SF

#### ASKING PRICE

Please contact brokers

#### ZONING

PDI – Planned Development Industrial

#### TRAFFIC COUNTS

I-5 – 121,749 ADT ('22)

#### HIGHLIGHTS

- Built in 1989
- Great visibility off I-5 with high traffic counts.
- Abundant parking
- Nearby businesses such as Wilsonville Toyota, Audi Wilsonville, Tonkin Wilsonville Nissan, Rite Aid Distribution Center, Pacific Foods Distribution Center, Al's Garden & Home, Xerox, 3D Systems and many more.



**COMMERCIAL  
REALTY ADVISORS  
NORTHWEST LLC**

**Bob LeFeber** 503.807.4174 | bob@cra-nw.com  
**Sam LeFeber** 503.866.1956 | sam@cra-nw.com

**503.274.0211**  
**www.cra-nw.com**



EXTERIOR IMAGES

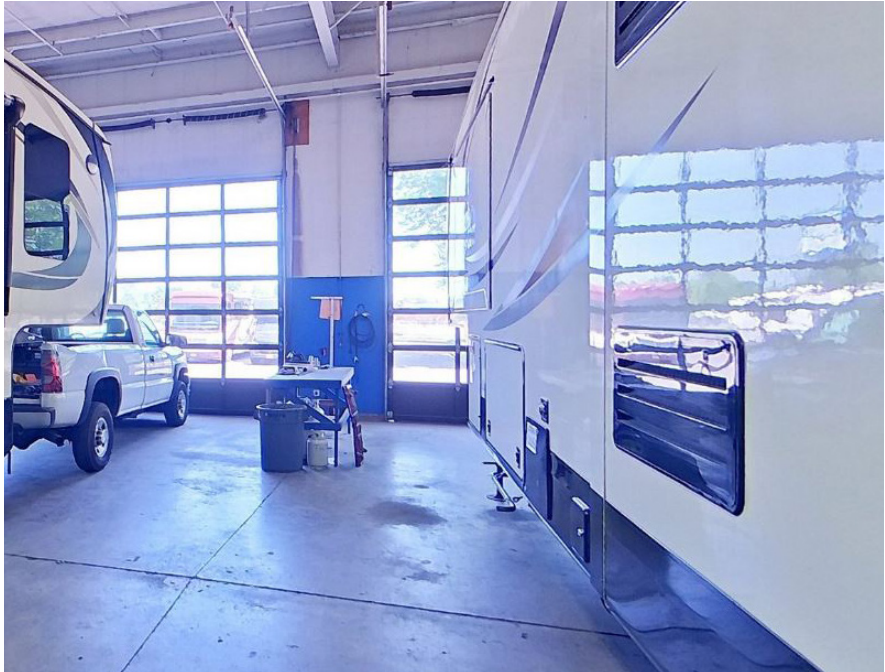
WILSONVILLE OPPORTUNITY  
26875 SW BOONES FERRY RD  
WILSONVILLE, OR





INTERIOR IMAGES

WILSONVILLE OPPORTUNITY  
26875 SW BOONES FERRY RD  
WILSONVILLE, OR

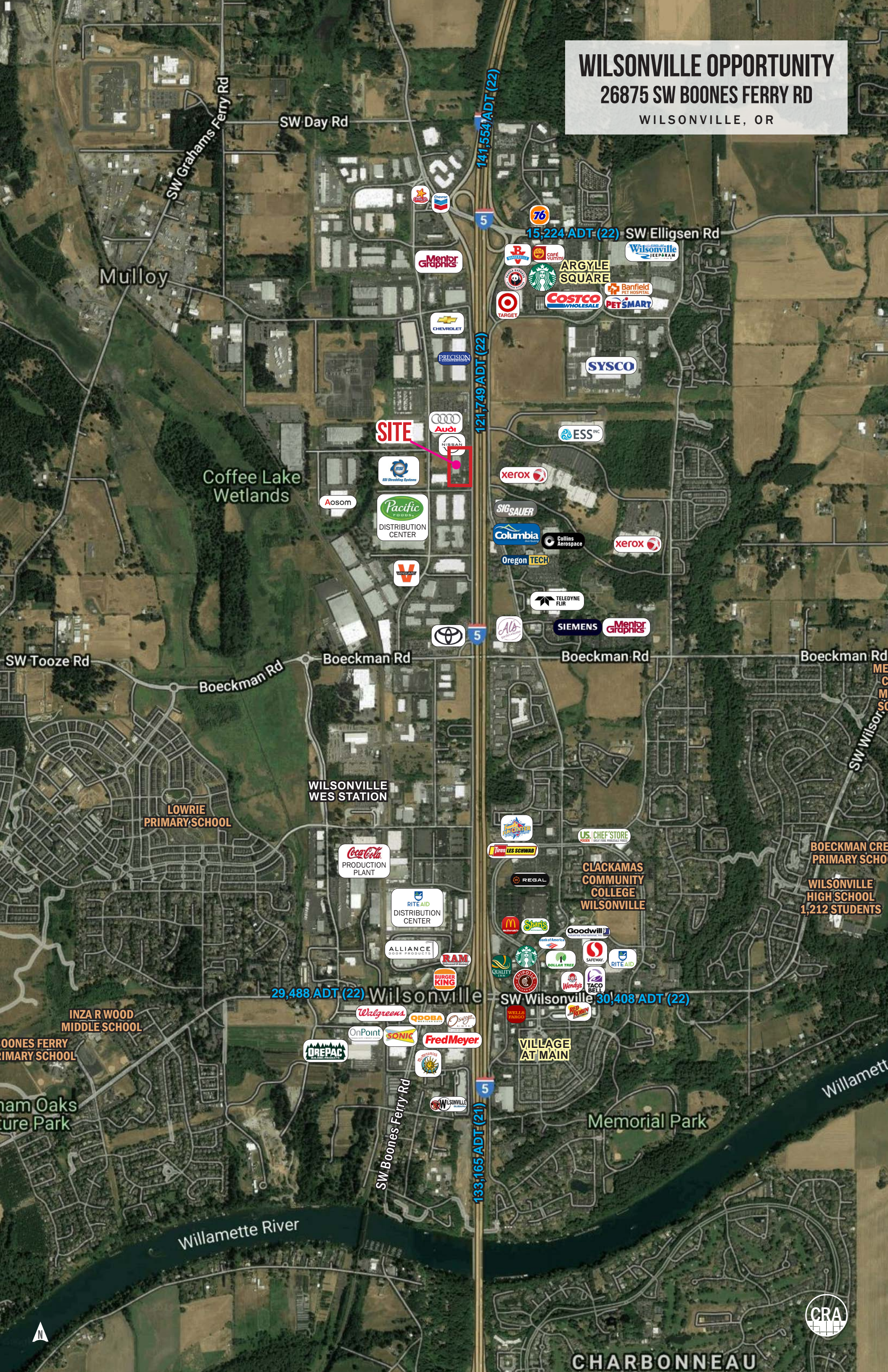




# WILSONVILLE OPPORTUNITY

26875 SW BOONES FERRY RD

WILSONVILLE, OR





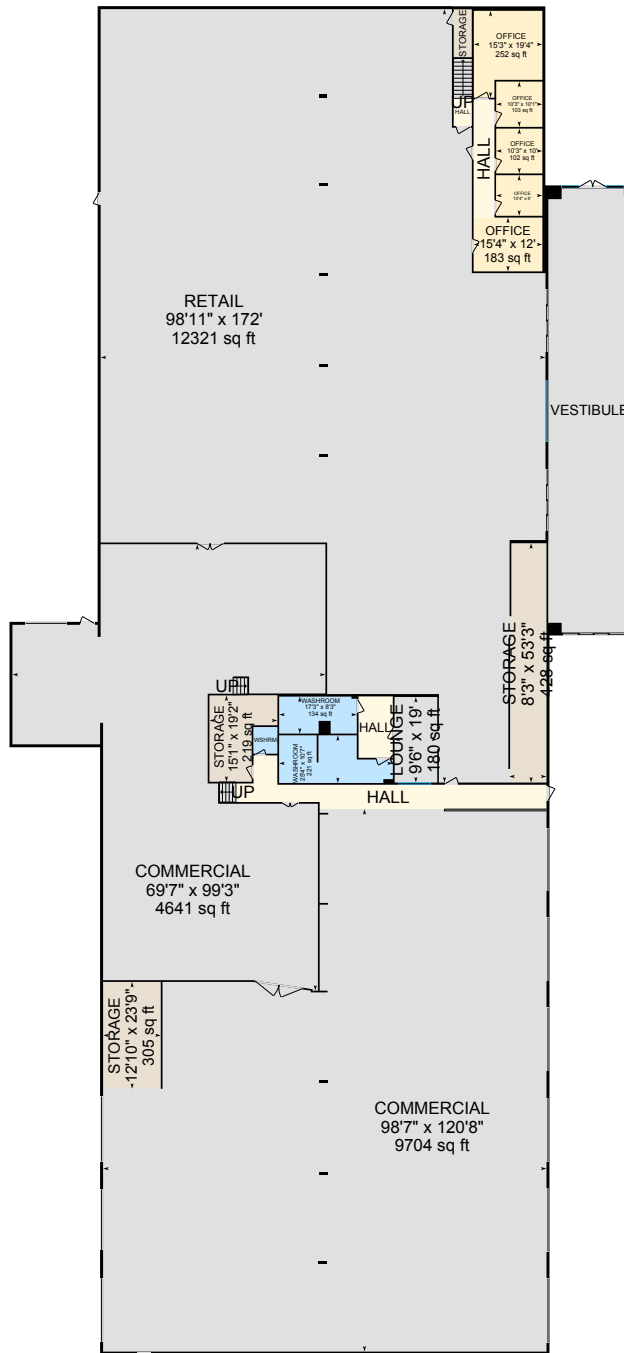
# WILSONVILLE OPPORTUNITY

## 26875 SW BOONES FERRY RD

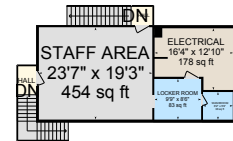
WILSONVILLE, OR

### FLOOR PLANS

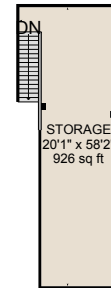
#### GROUND FLOOR



#### SECOND FLOOR BREAK ROOM

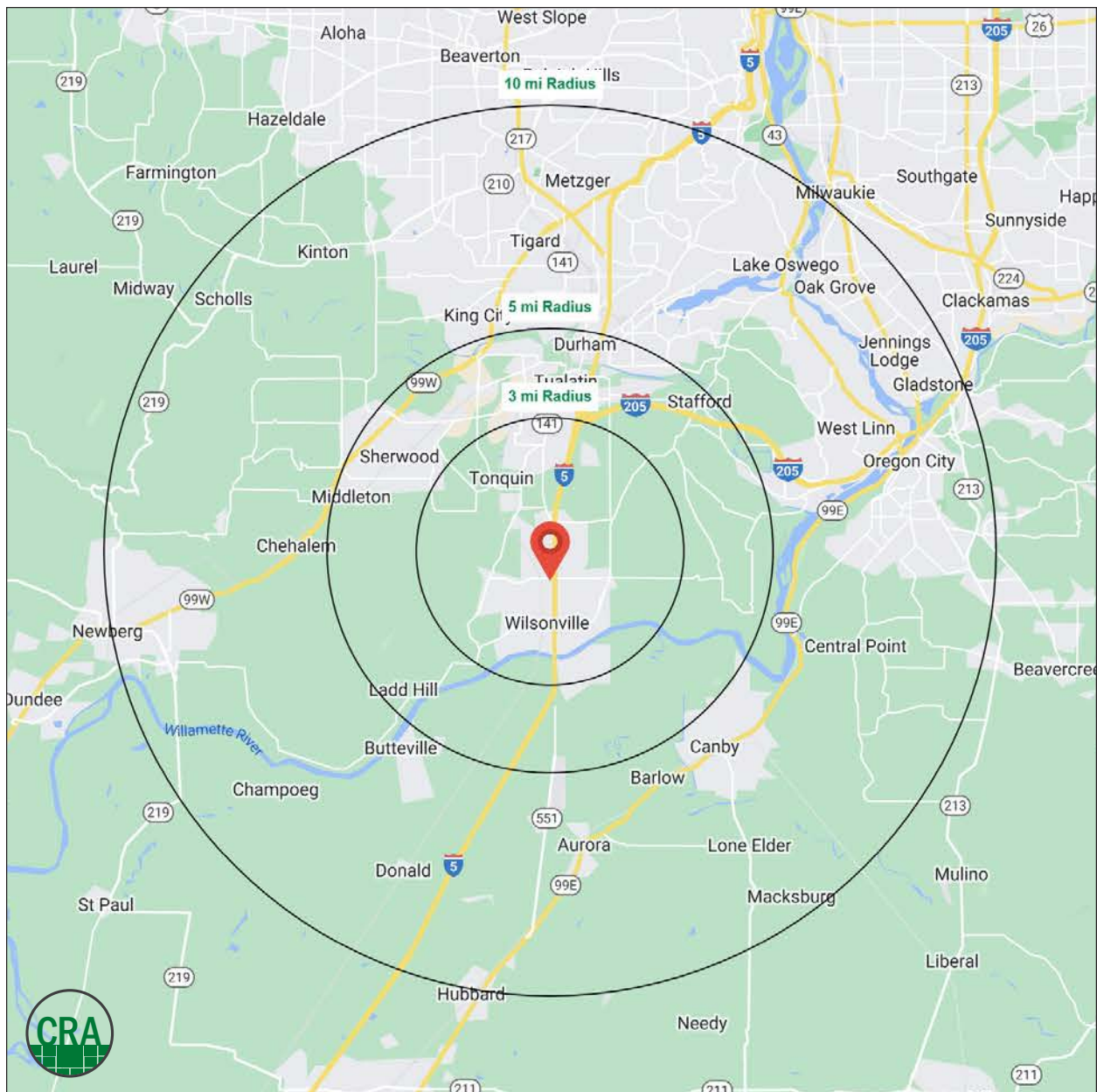


#### SECOND FLOOR STORAGE ROOM



WILSONVILLE, OR

**39.8**  
Median Age  
3 MILE RADIUS



## Summary Profile

2010-2020 Census, 2023 Estimates with 2028 Projections  
Calculated using Weighted Block Centroid from Block Groups



Lat/Lon: 45.3257/-122.7708

26875 SW Boones Ferry Rd Wilsonville, OR 97070	3 mi radius	5 mi radius	10 mi radius
<b>Population</b>			
2023 Estimated Population	39,459	88,313	444,739
2028 Projected Population	40,278	89,431	443,936
2020 Census Population	38,601	86,740	441,776
2010 Census Population	31,132	75,014	398,950
Projected Annual Growth 2023 to 2028	0.4%	0.3%	-
Historical Annual Growth 2010 to 2023	2.1%	1.4%	0.9%
2023 Median Age	39.8	39.6	41.1
<b>Households</b>			
2023 Estimated Households	15,436	34,506	177,213
2028 Projected Households	15,689	34,831	176,706
2020 Census Households	14,757	32,892	172,483
2010 Census Households	11,905	28,563	157,442
Projected Annual Growth 2023 to 2028	0.3%	0.2%	-
Historical Annual Growth 2010 to 2023	2.3%	1.6%	1.0%
<b>Race and Ethnicity</b>			
2023 Estimated White	75.9%	75.6%	77.1%
2023 Estimated Black or African American	5.4%	3.3%	2.3%
2023 Estimated Asian or Pacific Islander	6.2%	6.6%	7.8%
2023 Estimated American Indian or Native Alaskan	0.7%	0.7%	0.6%
2023 Estimated Other Races	11.9%	13.8%	12.2%
2023 Estimated Hispanic	12.2%	14.1%	12.1%
<b>Income</b>			
2023 Estimated Average Household Income	\$143,482	\$149,518	\$154,084
2023 Estimated Median Household Income	\$117,264	\$117,572	\$116,002
2023 Estimated Per Capita Income	\$57,006	\$58,860	\$61,602
<b>Education (Age 25+)</b>			
2023 Estimated Elementary (Grade Level 0 to 8)	2.1%	2.4%	2.2%
2023 Estimated Some High School (Grade Level 9 to 11)	2.2%	2.4%	2.7%
2023 Estimated High School Graduate	17.0%	16.2%	15.8%
2023 Estimated Some College	20.6%	22.2%	21.3%
2023 Estimated Associates Degree Only	8.2%	8.0%	8.0%
2023 Estimated Bachelors Degree Only	34.1%	31.8%	31.5%
2023 Estimated Graduate Degree	15.9%	17.1%	18.5%
<b>Business</b>			
2023 Estimated Total Businesses	2,126	5,637	26,945
2023 Estimated Total Employees	21,947	53,410	199,290
2023 Estimated Employee Population per Business	10.3	9.5	7.4
2023 Estimated Residential Population per Business	18.6	15.7	16.5



*For more information, please contact:*

**BOB LEFEBER** 503.807.4174 | bob@cra-nw.com

**SAM LEFEBER** 503.866.1956 | sam@cra-nw.com



KNOWLEDGE

RELATIONSHIPS

EXPERIENCE



**COMMERCIAL  
REALTY ADVISORS  
NORTHWEST LLC**

*Licensed brokers in Oregon & Washington*

📍 15350 SW Sequoia Pkwy, Suite 198 • Portland, Oregon 97224



**www.cra-nw.com**



**503.274.0211**

The information herein has been obtained from sources we deem reliable. We do not, however, guarantee its accuracy. All information should be verified prior to purchase/leasing. View the Real Estate Agency Pamphlet by visiting our website, [www.cra-nw.com/home/agency-disclosure.html](http://www.cra-nw.com/home/agency-disclosure.html). CRA PRINTS WITH 30% POST-CONSUMER, RECYCLED-CONTENT MATERIAL.